

TENDACO ®

PVC / TÉCNICO



PVC / TECNICO

“

La qualità dell'offerta consente di garantire ai clienti benefici concreti: il mio obiettivo è essere presenti sul mercato con trasparenza e offrire risposte tangibili a chi sceglie di collaborare con noi.

”

“ The quality of the offer makes it possible to ensure real benefits for customers: to be able to be in the market with transparency is my goal, to offer answers concrete to those who choose to work with us.”

LODOVICO ZANATTA



TENDACO 

“

Tecnologia e innovazione sono per me fondamentali: riuscire a implementare in modo efficace i processi produttivi rappresenta una sfida e uno stimolo per migliorare e ottenere grandi risultati.

”

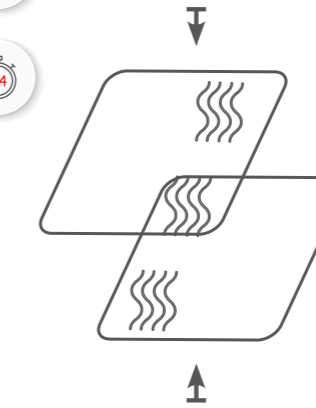
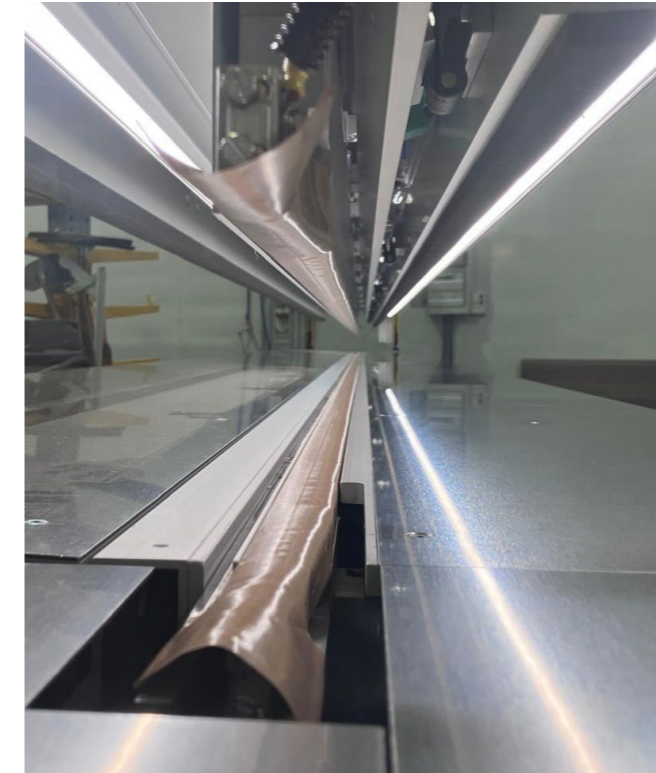
“ Technology and innovation are fundamental to me: being able to efficiently implement production processes is a challenge and a stimulus to improve and guarantee great results.”

ROBERTO NARDIN

TENDACO 



Saldato a barra / *Bar welding 2.0*



a. Le sezioni vengono sovrapposte di una quota fissa, chiamata “sormonto”, grazie a battute automatiche che garantiscono la linearità del processo.

The sections are overlapped by a fixed amount, called “overlap”, thanks to automatic stops that guarantee the linearity of the process.



la Tecnologia *Technology*



b. I sormonti vengono saldati insieme mediante una barra calda, la cui “ricetta” di tempi e temperature è definita in base alla tipologia di materiale utilizzato.

The overlaps are welded together using a hot bar, whose “recipe” of times and temperatures is defined based on the type of material used.

“La tecnologia di saldatura a caldo su barra continua a rappresentare la soluzione ideale per la confezione di tessuti tecnici. Oggi, grazie a un parco macchine di ultima generazione, è possibile ottenere prodotti sempre più performanti. I nuovi sistemi permettono di regolare i tempi di saldatura e la temperatura delle barre, garantendo maggiore precisione e versatilità nei processi di produzione.”

“Hot bar welding technology continues to represent the ideal solution for the manufacturing of technical fabrics, but today, thanks to a fleet of latest generation machines, it is possible to obtain increasingly high-performance products. The new systems offer the possibility of regulating the welding times and the temperature of the bars, thus guaranteeing greater precision and versatility in the production processes.”

SI SALDATURA UNIFORME
UNIFORM WELDING

SI GESTIONE TEMPERATURA INDIPENDENTE
SUPERIORE/INFERIORE
INDEPENDENT TEMPERATURE CONTROL FOR
UPPER/LOWER

SI GESTIONE TEMPO DI SALDATURA INDIPENDENTE
PER SINGOLA BARRA
INDEPENDENT WELDING TIME CONTROL
FOR EACH SINGLE BAR

SI DIVERSE TIPOLOGIE DI SPESSORE DI SALDATURA
DIFFERENT TYPES OF WELDING THICKNESSES

▪ Saldatura 2 cm / Welding 2 cm



▪ Saldatura 1 cm / Welding 1 cm



▪ Saldatura 0,5 cm / Welding 0,5 cm



la Tecnologia
Technology



Indice

Accessori Telo24 *Fabrics accessories*

Rinforzi28
Reinforcement

Tondino con guaina30
Rod with sheath

Tasche32
Pockets

Tondini33
Rods

Mantovane35
Valances

Decori telo36
Fabric decorations

Greche37
Greek

Finestrature38
Windows

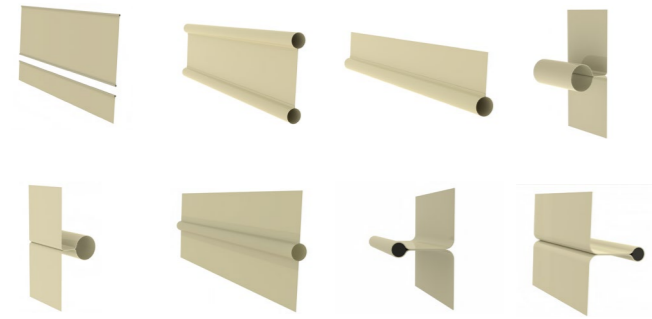
Calcolo telo40
Cloth calculation

PVC

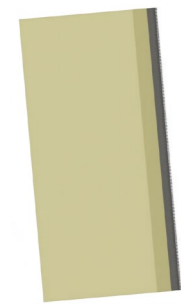


Unione Orizzontale / Horizontal union

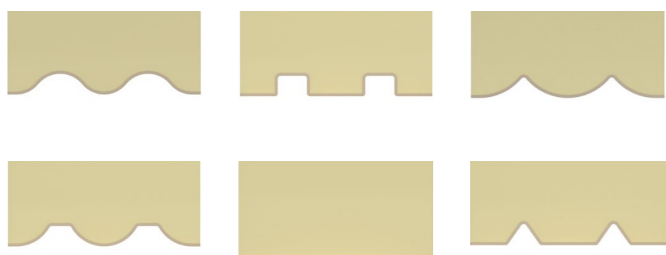
TASCHE / POCKETS



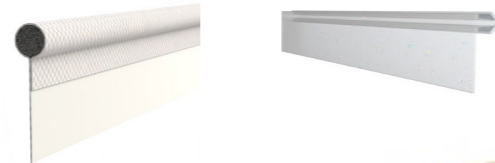
ZIP / ZIP



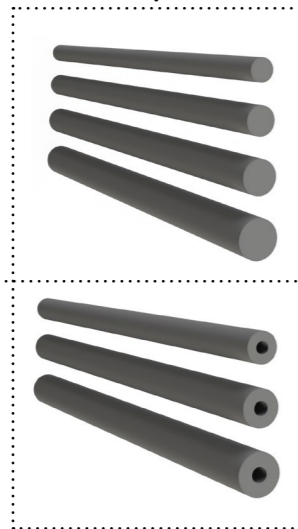
MANTOVANE / VALANCES



KEDER / KEDER



TONDINI / RODS



RINFORZO / REINFORCEMENT



RINFORZO / REINFORCEMENT

per Cristal / for Cristal



TECNOLOGIA / TECHNOLOGY

saldato a barra
bar welding



SALDATURA 1 CM



SALDATURA 2 CM



SALDATURA 0,5 CM



CONFEZIONE / PACKAGING

imballo singolo su sacchetto
/ single packing on bag



imballo multiplo su sacchetto
/ multiple packing on bag

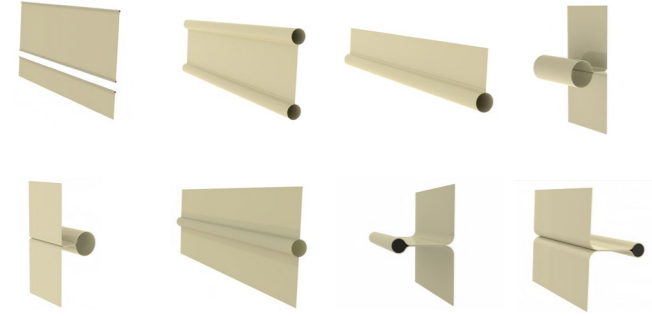


imballo multiplo su scatola
/ packing on the box

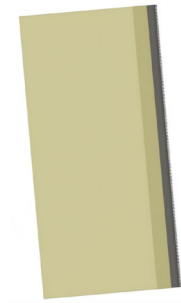


Unione Verticale / Vertical union

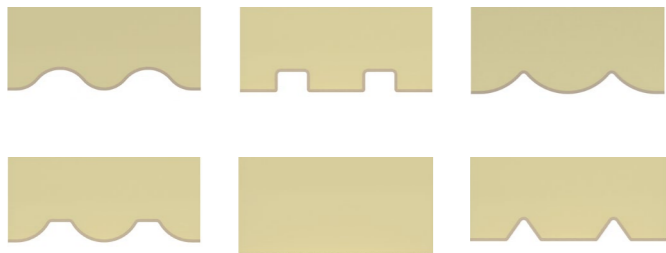
TASCHE / POCKETS



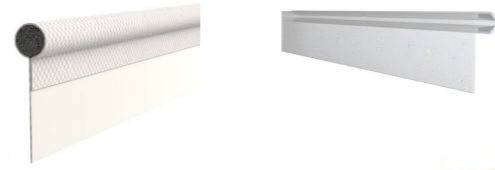
ZIP / ZIP



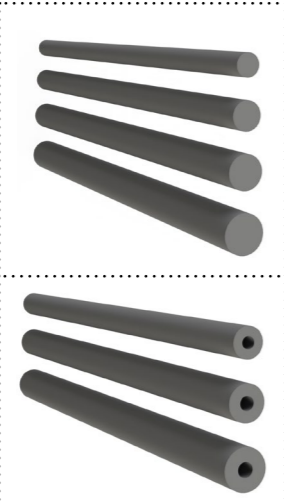
MANTOVANE / VALANCES



KEDER / KEDER



TONDINI / RODS



RINFORZO / REINFORCEMENT



RINFORZO / REINFORCEMENT



lati con piega da 3,7 cm
/ side with pleats

RINFORZO / REINFORCEMENT

per Cristal / for Cristal



TECNOLOGIA / TECHNOLOGY

saldato a barra
bar welding



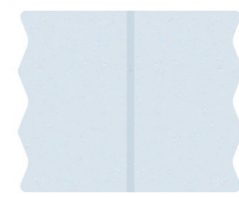
SALDATURA 1 CM



SALDATURA 2 CM



SALDATURA 0,5 CM

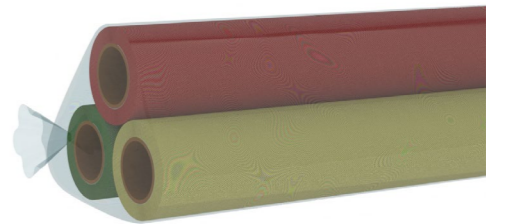


CONFEZIONE / PACKAGING

imballo singolo su sacchetto
/ single packing on bag



imballo multiplo su sacchetto
/ multiple packing on bag



imballo multiplo su scatola
/ packing on the box



Rinforzi Reinforcement

Sui teli destinati all'avvolgimento ed ordinati con tessuto in grande altezza o con unioni orizzontali, non sono consigliabili la realizzazione di orli laterali e l'applicazione di rinforzi. La misura standard (in larghezza) del rinforzo è di 11 cm (misura minima 9 cm). La misura massima (in larghezza) senza sovrapprezzo del rinforzo è di 15 cm.

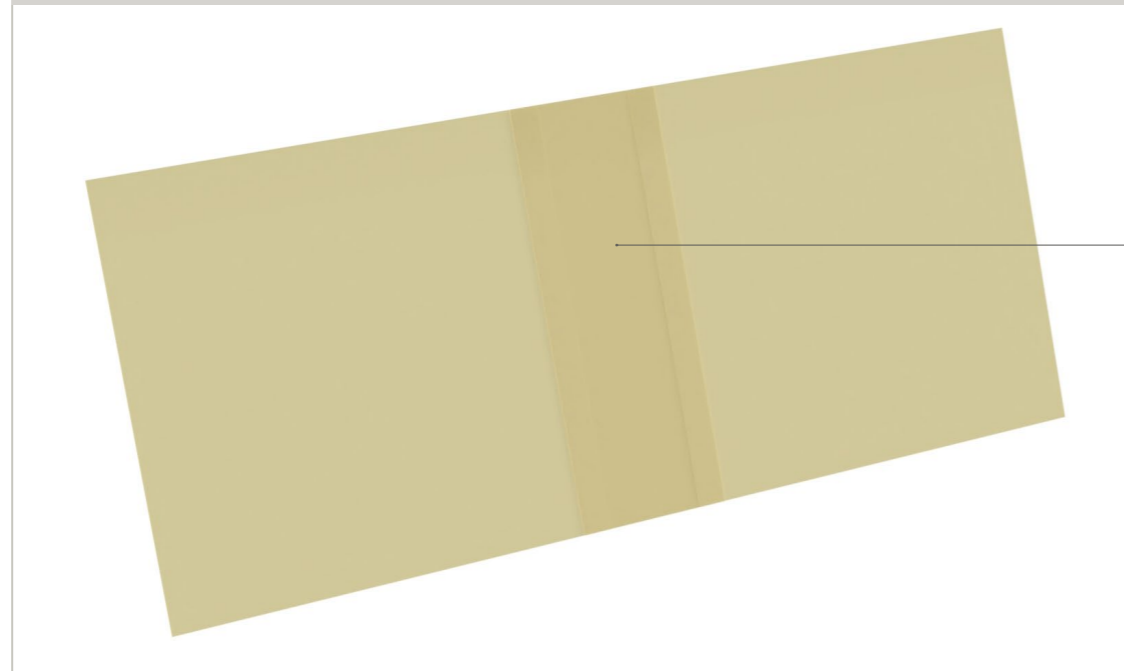
On roll-up awning cloth ordered with wide width fabrics or fabrics with horizontal welds is not possible to realise side hems or to set reinforcements.

The standard reinforcement width is of 11 cm (minimal size 9 cm). The maximal reinforcement width without additional charge is of 15 cm.

Sui teli ordinati con specifica indicazione della misura finita in larghezza (no nr. altezze), non è in alcun modo possibile stabilire preventivamente l'eventuale misura dei tagli laterali o l'eventuale misura dei rapporti riga terminali laterali. Sui teli realizzati con tessuti rigati aventi rapporto riga asimmetrico, non è in alcun modo garantito il rispetto della successione dei rapporti eventualmente indicata in campionario. Per tessuti, lavorazioni ed accessori non specificati, richiedere sempre conferma di reperibilità, fattibilità e relativo preventivo.

It's not possible to set the eventual size of lateral cuts or terminal row reports, on fabrics ordered with a specific finished width (not nr. heights). On fabrics realised with striped fabrics having row report asymmetrical, is not guarantee the respect of repeat succession indicated on photographical sample. For not specified fabrics, works and accessories, please ask always confirmation for availability, practicability and the relative quotation.

Rinforzo / Reinforcement



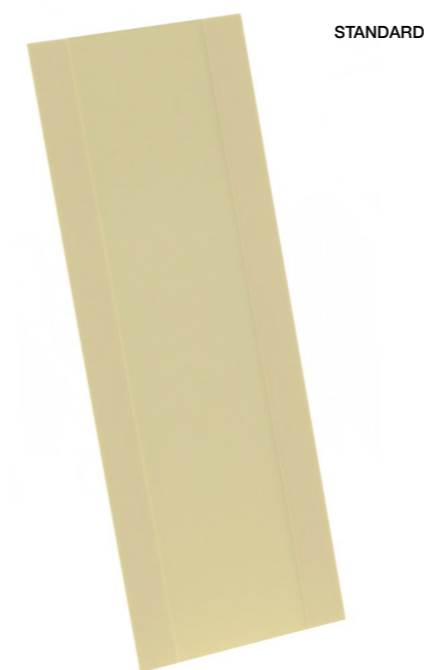
posizione rinforzi / reinforcements position



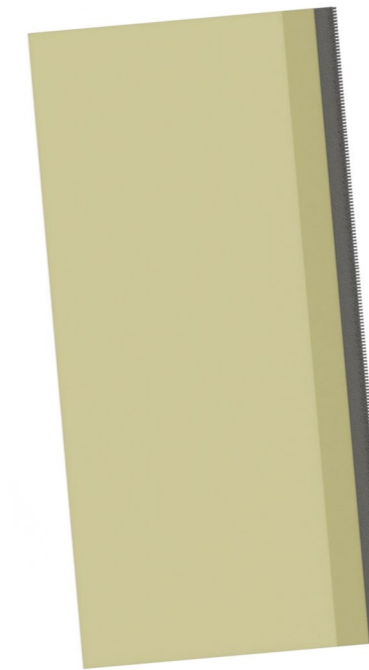
I rinforzi, ordinati con specifica indicazione di posizione, che coincidessero alle unioni verticali del telo, saranno spostati ed applicati, senza alcun preavviso, a lato delle unioni coincidenti, salvo preventive diverse disposizioni.

The reinforcements ordered with a specific position on cloth will be shifted and applied next to the seam of cloth without advice or notice, if they fall exactly on vertical welds of cloth, except preemptive different dispositions.

rinforzo centrale / central reinforcements



zip laterale / side zip



rinforzo angolare / angular reinforcement



Tondino con guaina Rod with sheath

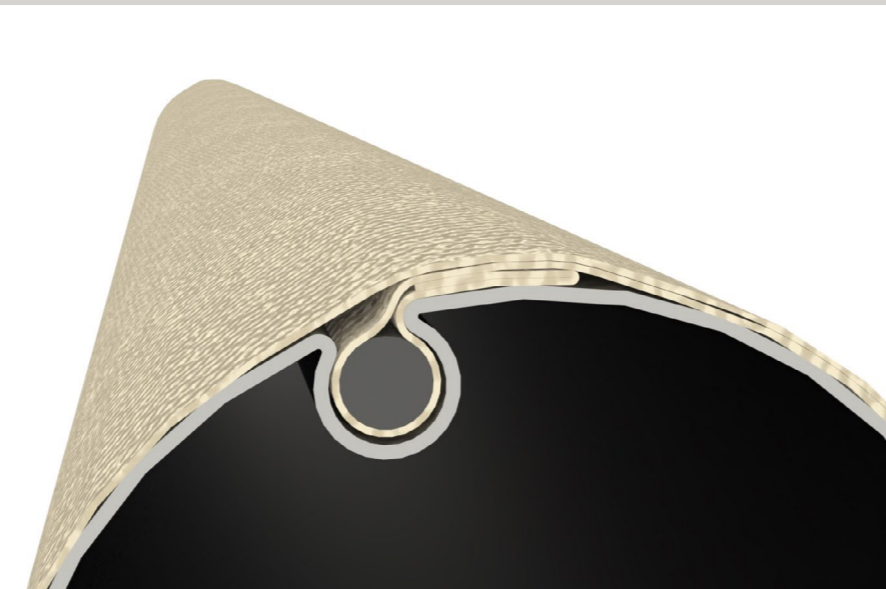
Il tondino con guaina (keder) sostituisce il risvolto con tondino, creando un bordo lineare senza sormonti che conferisce al telo le seguenti caratteristiche:

- stabilità longitudinale;
- praticità inserimento nei profili;
- riduzione gobba da risvolto e segni di arrotolamento;
- resistenza all' allungamento sotto trazione.

The rod with sheath (keder) replace the turn-up with rod, creating a inner edge whitout overlaps with gives the fabrics the following characteristics:

- longitudinal stability;
- practicaly of insertion in profiles;
- reduction of lapel hump and single of rolling;
- resistence to elongation under tension.

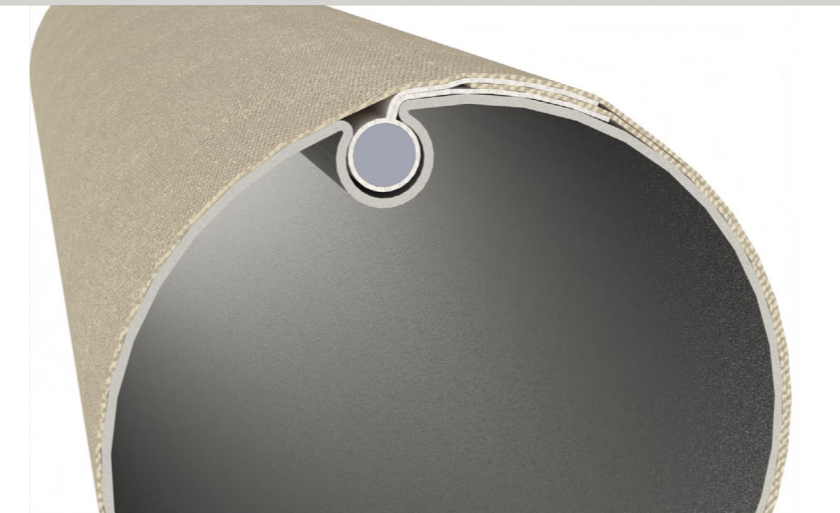
▪ Sistema standard /Standard system



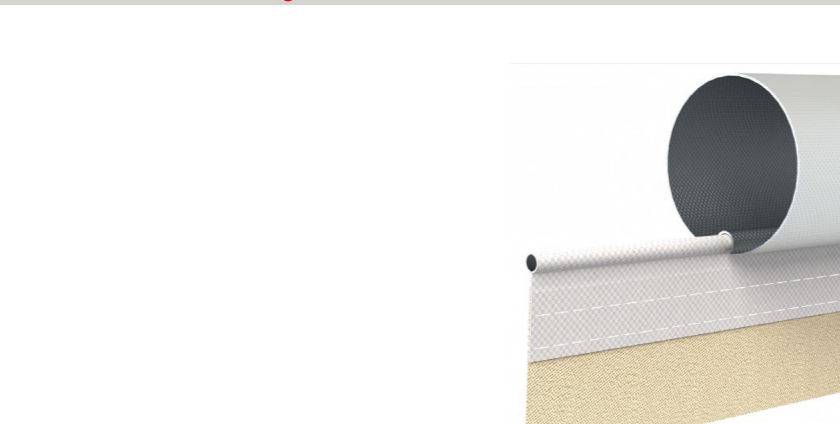
inserimento tondino / insertion of rod



▪ Sistema tondino con guaina / Rod system with sheath



inserimento tondino con guaina / insertion of rod with sheath



- STABILITÀ LONGITUDINALE
- PRATICITÀ INSERIMENTO NEI PROFILI
- RIDUZIONE GOBBA DA RISVOLTO E SEGNI DI ARROTOLAMENTO
- RESISTENZA ALL' ALLUNGAMENTO SOTTO TRAZIONE
- LONGITUDINAL STABILITY
- PRATICALLY OF INSERTION IN PROFILES
- REDUCTION OF LAPEL HUMP AND SINGLE OF ROLLING
- RESISTENCE TO ELONGATION UNDER TENSION

▪ Tipologie tondino con guaina Types of rod with sheath

CON MONO ALETTA
WITH SINGLE FIN



5-5

7-5

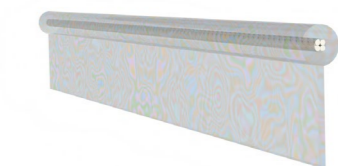
8-5



ESTRAIBILE TRASPARENTE
REMOVABLE TRANSPARENT



CON ANIMA IN POLIESTERE
TRASPARENTE WITH POLYESTER CORE



0

STANDARD



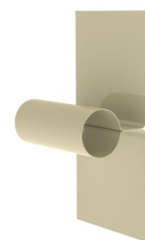
1

TASCA INFERIORE LOWER POCKET



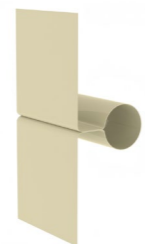
2

TASCA INTERNA INNER POCKET



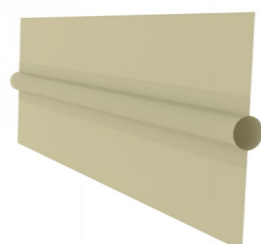
3

TASCA ESTERNA OUTER POCKET



4

TASCA APPLICATA APPLIED POCKET



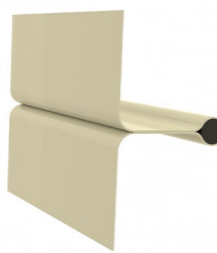
5

TASCA TUBETTO INT INNER POCKET WITH ROD



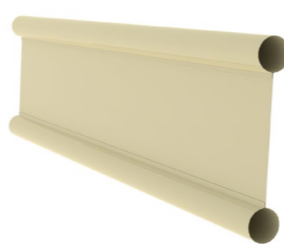
6

TASCA TUBETTO EST OUTER POCKET WITH ROD



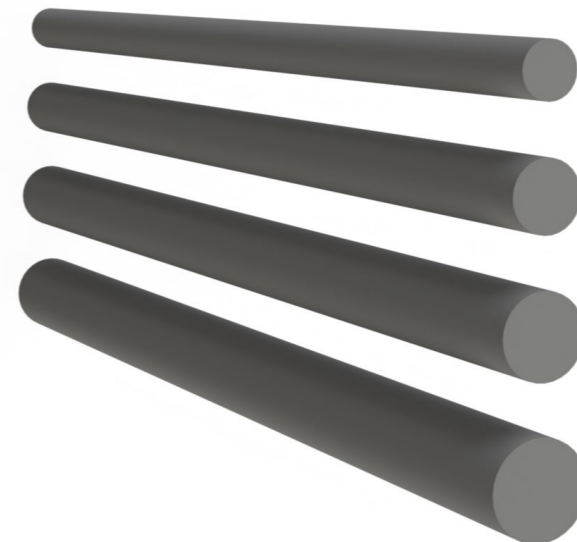
7

TASCA DOPPIA DOUBLE POCKET



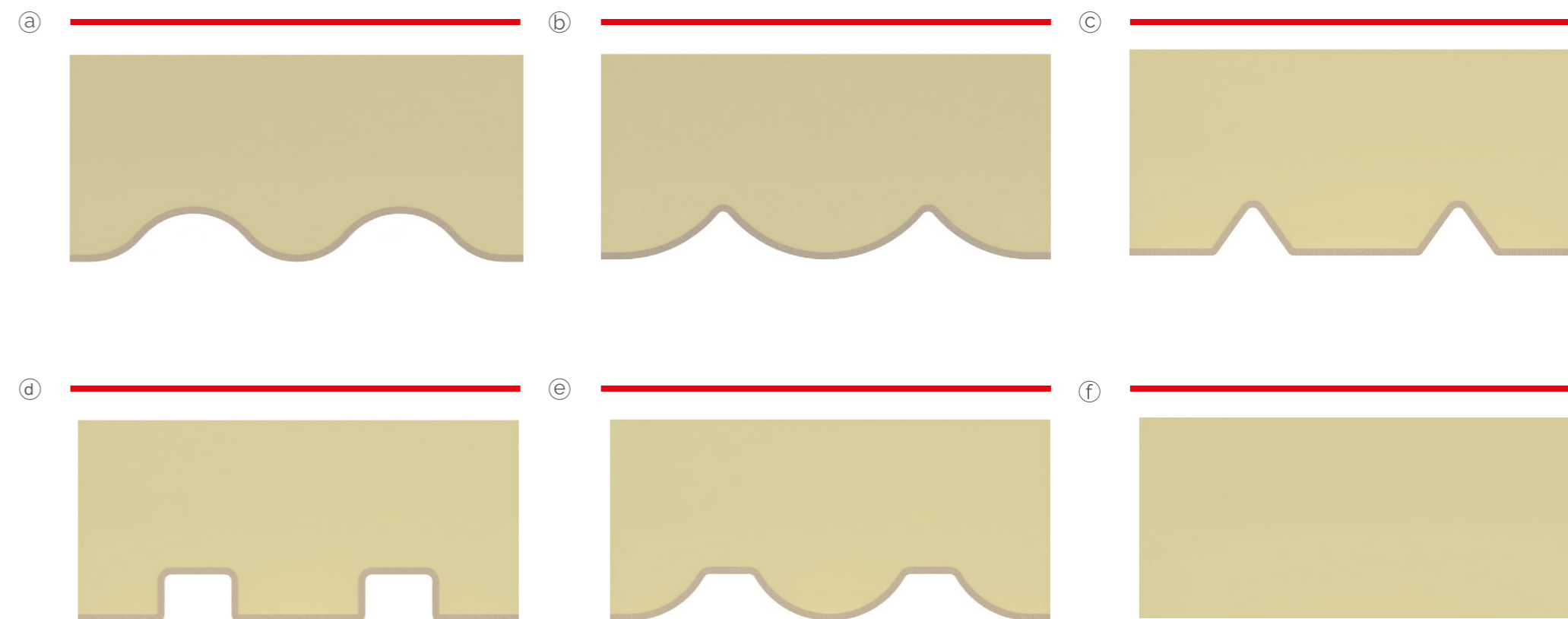
tondino pieno / solid rod

tondino forato / drilled rod



Mantovane

Valances



Decori telo

Fabric decora

Greche

Greek

Font caratteri disponibili / Font at disposal

ALGERIAN	ABCDEFGH_ABCDEFGH_1234567890
Americana	ABCDEFGH_abcdefgh_1234567890
American Typewriter	ABCDEFGH_abcdefgh_1234567890
Arial	ABCDEFGH_abcdefgh_1234567890
Arnold Boehlin	ABCDEFGH_abcdefgh_1234567890
Avant Garde	ABCDEFGH_abcdefgh_1234567890
Bodoni	ABCDEFGH_abcdefgh_1234567890
Bowl Script	ABCDEFGH_abcdefgh_1234567890
Caslon	ABCDEFGH_abcdefgh_1234567890
Clarendon	ABCDEFGH_abcdefgh_1234567890
Cooper	ABCDEFGH_abcdefgh_1234567890
Expo	ABCDEFGH_abcdefgh_1234567890
Futura	ABCDEFGH_abcdefgh_1234567890
Microgramma	ABCDEFGH_L_abcdefgh_1234567890
Old English	ABCDEFGH_abcdefgh_1234567890
Optima	ABCDEFGH_abcdefgh_1234567890
Palmer Script	ABCDEFGH_abcdefgh_1234567890
Rockwell	ABCDEFGH_abcdefgh_1234567890
Souvenir	ABCDEFGH_abcdefgh_1234567890
Times Italic	ABCDEFGH_abcdefgh_1234567890
University Down	ABCDEFGH_abcdefgh_1234567890
Windsor	ABCDEFGH_abcdefgh_1234567890

* COMUNICARE IN UFFICIO
IL NOME DEL FONT



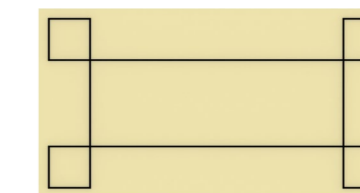
Greca su telo singola

/ Single greek key on cloth



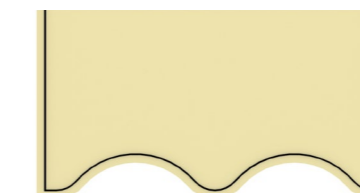
Greca su telo doppia

/ Double greek key on cloth



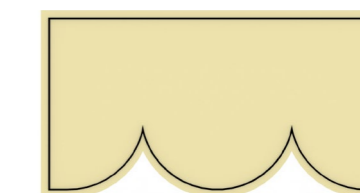
Greca su mantovana singola

/ Single greek key on valance



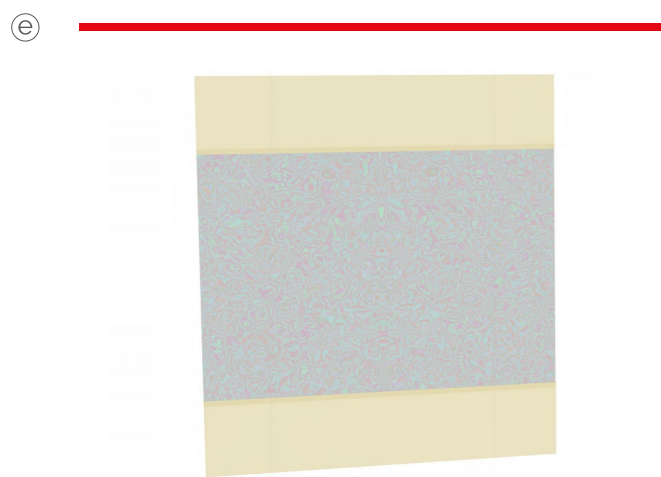
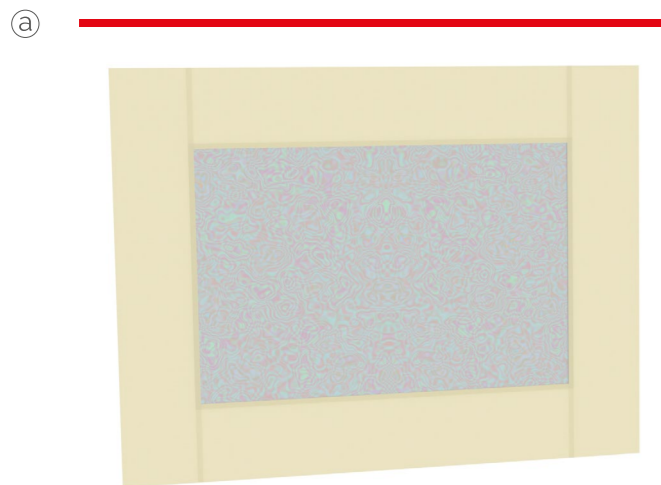
Greca su mantovana doppia

/ Double greek key on valance



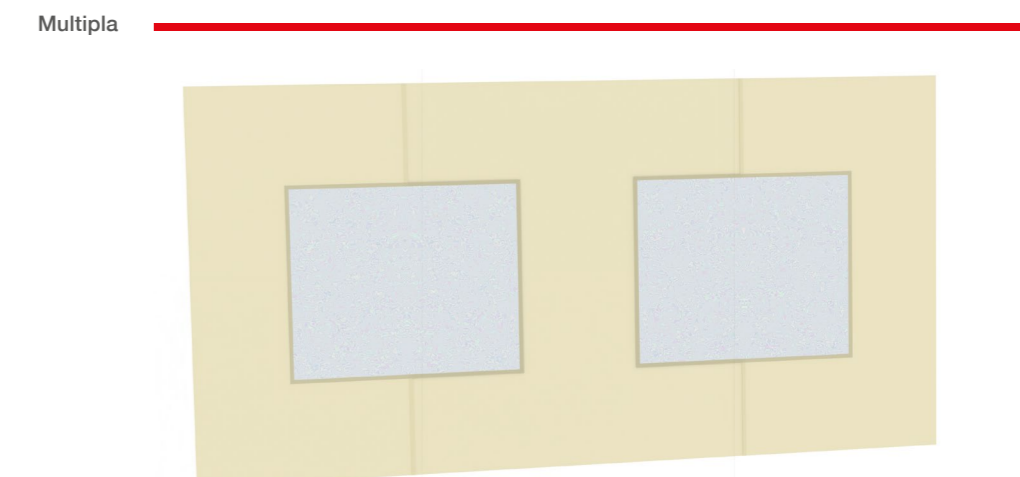
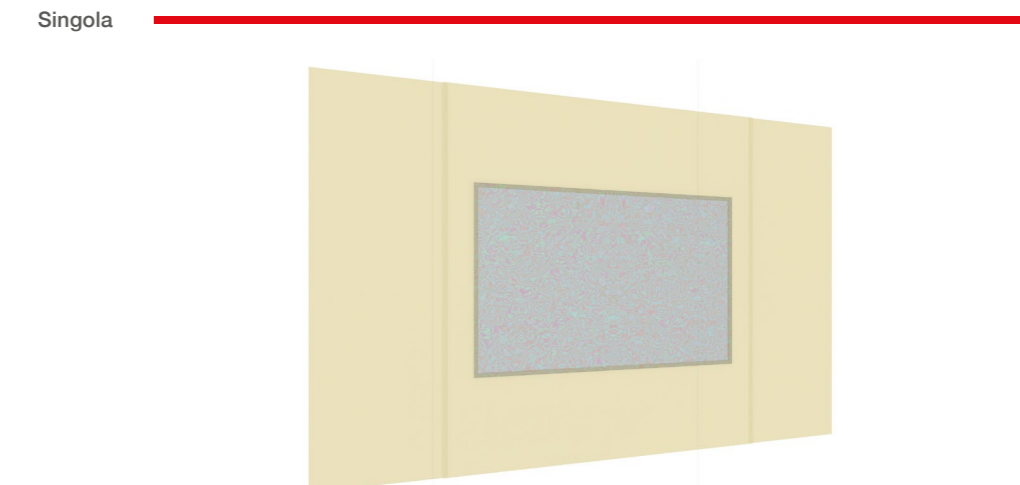
Finestrature saldate

Soldered windows



Finestrature tagliate

Cut windows



Calcolo telo

Cloth calculation

Larghezza: misura finita + 5 cm. rifilo laterale.

Sporgenza: vuoto per pieno (multipli altezza tessuto in cm) di: misura finita + altezza mantovana finita + 5 cm per ogni risvolto tubetto.

N.B.: la massima sporgenza multipla raggiungibile del telo saldato in PVC, eventualmente comprensiva di altezza mantovana finita, viene calcolata deducendo 1,8 cm per ogni unione e 5 cm per ogni risvolto tubetto.

Per tessuti, lavorazioni ed accessori non specificati, richiedere sempre conferma di reperibilità, fattibilità e relativo preventivo.

Width: finished measurement + 5 cm lateral cut.

Projection: (multiples of fabric height in cm): finished measurement + finished valance height + 5 cm for every small tube lapel.

Please note: to find the maximal multiple reachable projection on welded PVC cloth, eventually also with valance, detract 1,8 cm for every weld and 5 cm for every small tube lapel.

For not specified fabrics, works and accessories, please ask always confirmation for availability, practicability and the relative quotation.

A) Dimensioni finite

Finished sizes



Esempio

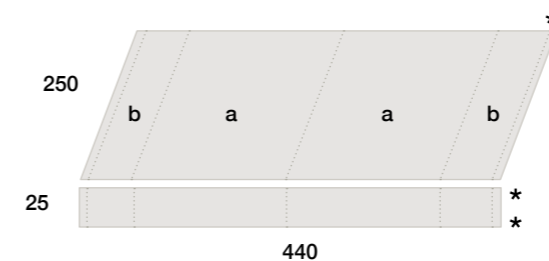
Example

Superficie / Area = $4,4 \times (2,5 + 0,25) = 12,1 \text{ m}^2$

*Tubetti / Tubes

B) Unione verticale

Vertical seam



Esempio con altezza tessuto

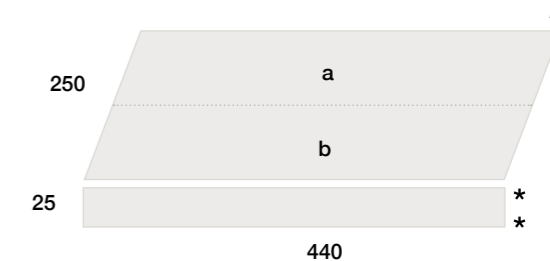
Example with fabric height

Larghezza / Width = $4 \times 120 = 480 \text{ cm}$
 Sporgenza / Projection = $250 + 25 + 15(*) = 290 \text{ cm}$
 Superficie / Area = $4,8 \times 2,9 = 13,9 \text{ m}^2$

*Tubetti / Tubes

C) Unione orizzontale

Horizontal seam



Esempio con altezza tessuto

Example with fabric height

Larghezza / Width = $440 + 10(**) = 450 \text{ cm}$
 Sporgenza / Projection = $2 \times 180 = 360 \text{ cm}$
 Superficie / Area = $4,5 \times 3,6 = 16,2 \text{ m}^2$

*Tubetti / Tubes
 **Rifilo laterale / Lateral cut

Difetti del telo

Fabric defects



Ondulazioni vicine alle unioni
Undulations near the seams



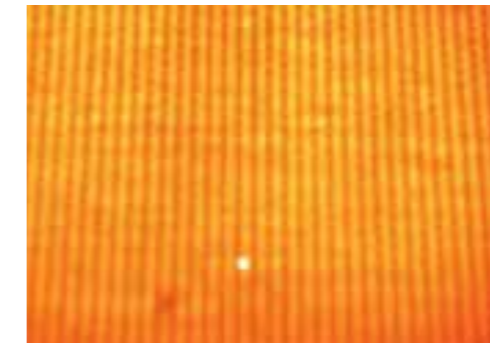
Rigature
Lines



Ondulazioni vicine alle unioni
Undulations near the seams



Rigature
Lines



Micro-fori
Micro-holes



Ondulazioni al centro del telo
Undulations in the middle of the cloth



Ondulazioni ai bordi del telo
Undulations to the edges of the cloth



Micro-fori
Micro-holes



Ondulazioni al centro del telo
Undulations in the middle of the cloth



Pieghe di compressione e di avvolgimento
Folds of compression and the winding

catalogo PVC / TECNICO

TENDACO 

Via Del Commercio 22
31046 - Piavon di Oderzo (TV)

tel +39 0422 752560
fax +39 0422 752300

info@tendaco.it
www.tendaco.it

